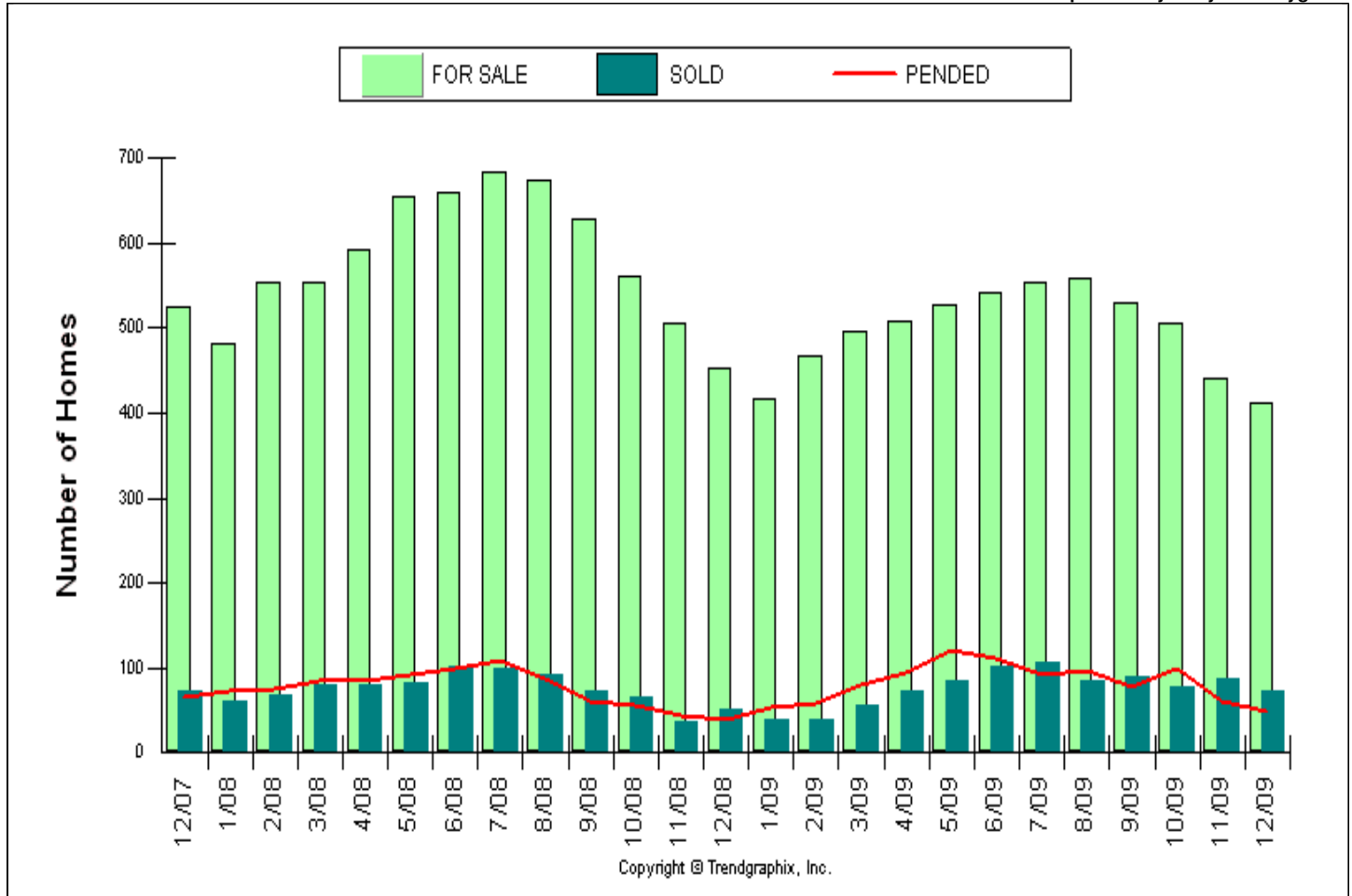


**Location : Bellingham (860)**  
**Number of Homes For Sale vs. Sold vs. Pended (Last 2 years)**  
**Price Range: \$0 - No Limit, SQFT Range: 0 - No Limit**

**Single Family Homes - All Property Statuses - All Properties**

**Prepared for you by: Wes Nygaard**



|          | 1 month |        |          | 1 year |        |          | 2 years |        |          |
|----------|---------|--------|----------|--------|--------|----------|---------|--------|----------|
|          | Nov 09  | Dec 09 | % Change | Dec 08 | Dec 09 | % Change | Dec 07  | Dec 09 | % Change |
| For Sale | 442     | 411    | -7.7%    | 453    | 411    | -9.3%    | 526     | 411    | -21.9%   |
| Sold     | 87      | 72     | -17.2%   | 50     | 72     | 44%      | 72      | 72     | 0%       |
| Pended   | 60      | 49     | -18.3%   | 39     | 49     | 25.6%    | 66      | 49     | -25.8%   |

| Date             | 12/07 | 1/08  | 2/08  | 3/08 | 4/08  | 5/08  | 6/08 | 7/08 | 8/08  | 9/08  | 10/08 | 11/08 | 12/08 | 1/09  | 2/09  | 3/09  | 4/09  | 5/09  | 6/09  | 7/09  | 8/09  | 9/09  | 10/09 | 11/09 | 12/09 |
|------------------|-------|-------|-------|------|-------|-------|------|------|-------|-------|-------|-------|-------|-------|-------|-------|-------|-------|-------|-------|-------|-------|-------|-------|-------|
| For Sale         | 526   | 483   | 554   | 554  | 593   | 655   | 659  | 684  | 675   | 628   | 562   | 506   | 453   | 417   | 467   | 497   | 509   | 528   | 541   | 553   | 560   | 530   | 505   | 442   | 411   |
| New Listing      | 72    | 138   | 143   | 153  | 163   | 214   | 196  | 183  | 159   | 116   | 105   | 71    | 66    | 105   | 133   | 147   | 164   | 157   | 159   | 163   | 157   | 118   | 149   | 71    | 59    |
| Sold             | 72    | 60    | 68    | 80   | 79    | 82    | 101  | 99   | 92    | 73    | 66    | 38    | 50    | 39    | 39    | 57    | 74    | 84    | 102   | 106   | 85    | 89    | 78    | 87    | 72    |
| Pended           | 66    | 74    | 75    | 85   | 86    | 92    | 99   | 108  | 88    | 60    | 56    | 44    | 39    | 54    | 59    | 81    | 95    | 120   | 111   | 91    | 96    | 77    | 100   | 60    | 49    |
| MOI* on Sold     | 7.3   | 8.1   | 8.1   | 6.9  | 7.5   | 8     | 6.5  | 6.9  | 7.3   | 8.6   | 8.5   | 13.3  | 9.1   | 10.7  | 12    | 8.7   | 6.9   | 6.3   | 5.3   | 5.2   | 6.6   | 6     | 6.5   | 5.1   | 5.7   |
| MOI* on Pended   | 8     | 6.5   | 7.4   | 6.5  | 6.9   | 7.1   | 6.7  | 6.3  | 7.7   | 10.5  | 10    | 11.5  | 11.6  | 7.7   | 7.9   | 6.1   | 5.4   | 4.4   | 4.9   | 6.1   | 5.8   | 6.9   | 5.1   | 7.4   | 8.4   |
| AR* on Sold      | 13.7  | 12.4  | 12.3  | 14.4 | 13.3  | 12.5  | 15.3 | 14.5 | 13.6  | 11.6  | 11.7  | 7.5   | 11    | 9.4   | 8.4   | 11.5  | 14.5  | 15.9  | 18.9  | 19.2  | 15.2  | 16.8  | 15.4  | 19.7  | 17.5  |
| AR* on Pended    | 12.5  | 15.3  | 13.5  | 15.3 | 14.5  | 14    | 15   | 15.8 | 13    | 9.6   | 10    | 8.7   | 8.6   | 12.9  | 12.6  | 16.3  | 18.7  | 22.7  | 20.5  | 16.5  | 17.1  | 14.5  | 19.8  | 13.6  | 11.9  |
| Avg. Act Price   | 472   | 473   | 494   | 498  | 498   | 506   | 522  | 519  | 522   | 530   | 532   | 528   | 531   | 541   | 532   | 529   | 523   | 536   | 523   | 521   | 527   | 512   | 510   | 501   | 480   |
| Avg. Sld Price   | 365   | 359   | 366   | 342  | 375   | 345   | 401  | 353  | 401   | 355   | 305   | 317   | 323   | 293   | 332   | 353   | 335   | 312   | 329   | 382   | 393   | 302   | 328   | 349   | 328   |
| Avg. Sq Ft Price | 199.9 | 183.2 | 195.8 | 179  | 189.8 | 179.9 | 202  | 187  | 199.1 | 191.8 | 179.2 | 168   | 172.4 | 160.7 | 178.8 | 166.1 | 171.5 | 171.5 | 170.3 | 191.5 | 191.4 | 173.5 | 171.1 | 177.6 | 164.5 |
| SP/LP Diff. %    | 96    | 96    | 97    | 97   | 97    | 98    | 98   | 97   | 96    | 96    | 96    | 95    | 95    | 96    | 90    | 97    | 95    | 98    | 97    | 95    | 97    | 97    | 97    | 96    | 96    |
| Days on Market   | 93    | 109   | 100   | 106  | 106   | 131   | 72   | 83   | 76    | 97    | 109   | 118   | 95    | 112   | 88    | 122   | 129   | 85    | 83    | 109   | 82    | 78    | 100   | 91    | 86    |
| SP/OLP Diff. %   | 92    | 92    | 94    | 93   | 95    | 95    | 96   | 93   | 90    | 89    | 91    | 90    | 86    | 90    | 86    | 90    | 84    | 93    | 93    | 89    | 92    | 92    | 88    | 90    | 92    |
| Avg CDOM         | 113   | 137   | 139   | 159  | 128   | 148   | 77   | 122  | 112   | 128   | 143   | 157   | 119   | 134   | 131   | 175   | 169   | 107   | 100   | 126   | 92    | 91    | 114   | 124   | 97    |
| Median Price     | 288   | 296   | 294   | 290  | 336   | 304   | 338  | 310  | 310   | 285   | 292   | 285   | 261   | 280   | 280   | 314   | 310   | 276   | 300   | 302   | 325   | 260   | 274   | 278   | 275   |

**\*MOI: Months of Inventory**

\*\*All reports are published Jan. 2010, based on data available at the end of Dec. 2009. This representation is based in whole or in part on data supplied by the NWMLS. Neither the Board or its MLS guarantees or is in any way responsible for its accuracy. Data maintained by the Board or its MLS may not reflect all real estate activity in the market. Report reflects activity by all brokers participated in the MLS.